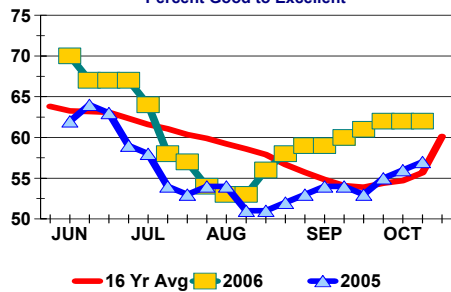


SOYBEAN CROP CONDITIONS & HISTORICAL PERSPECTIVE
10/10/06

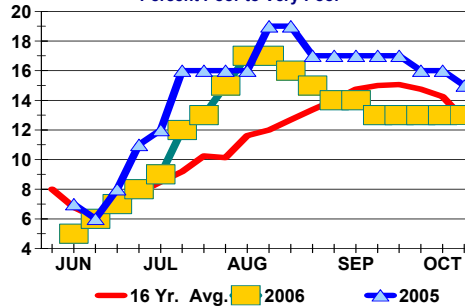
SOYBEANS

2006 Week Of	1990 - 2005		16-Year Average	1990 - 2005			
	2006	2005		Highest	Oldest Highest Year	Lowest	Oldest Lowest Year
Good/Excellent in Percent:							
Sep 17th	61	53	54	78	1994	40	2003
Sep 24th	62	55	54	79	1994	39	2003
Oct 1st	62	56	55	78	1992	38	2003
Oct 8th	62	57	56	78	1992	38	2003
Poor/Very Poor in Percent:							
Sep 17th	13	17	15	27	2003	2	1994
Sep 24th	13	16	15	27	2002	1	1994
Oct 1st	13	16	14	27	2003	3	1992
Oct 8th	13	15	13	27	2003	3	1992

SOYBEAN CROP CONDITIONS
Percent Good to Excellent



SOYBEAN CROP CONDITIONS
Percent Poor to Very Poor



***This report includes information from sources believed to be reliable and accurate as of the date of this publication, but no independent verification has been made and we do not guarantee its accuracy or completeness. This report should not be construed as a request to engage in any transaction involving the purchase or sale of a futures contract and/or commodity option thereon. The risk of loss in trading futures contracts or commodity options can be substantial, and investors should carefully consider the inherent risks of such an investment in light of their financial condition.